

Supplementary Manual
for
Model 287
Ionizer Performance Analyzer

287-1/100A
V1.07
P/N 0345006
020106

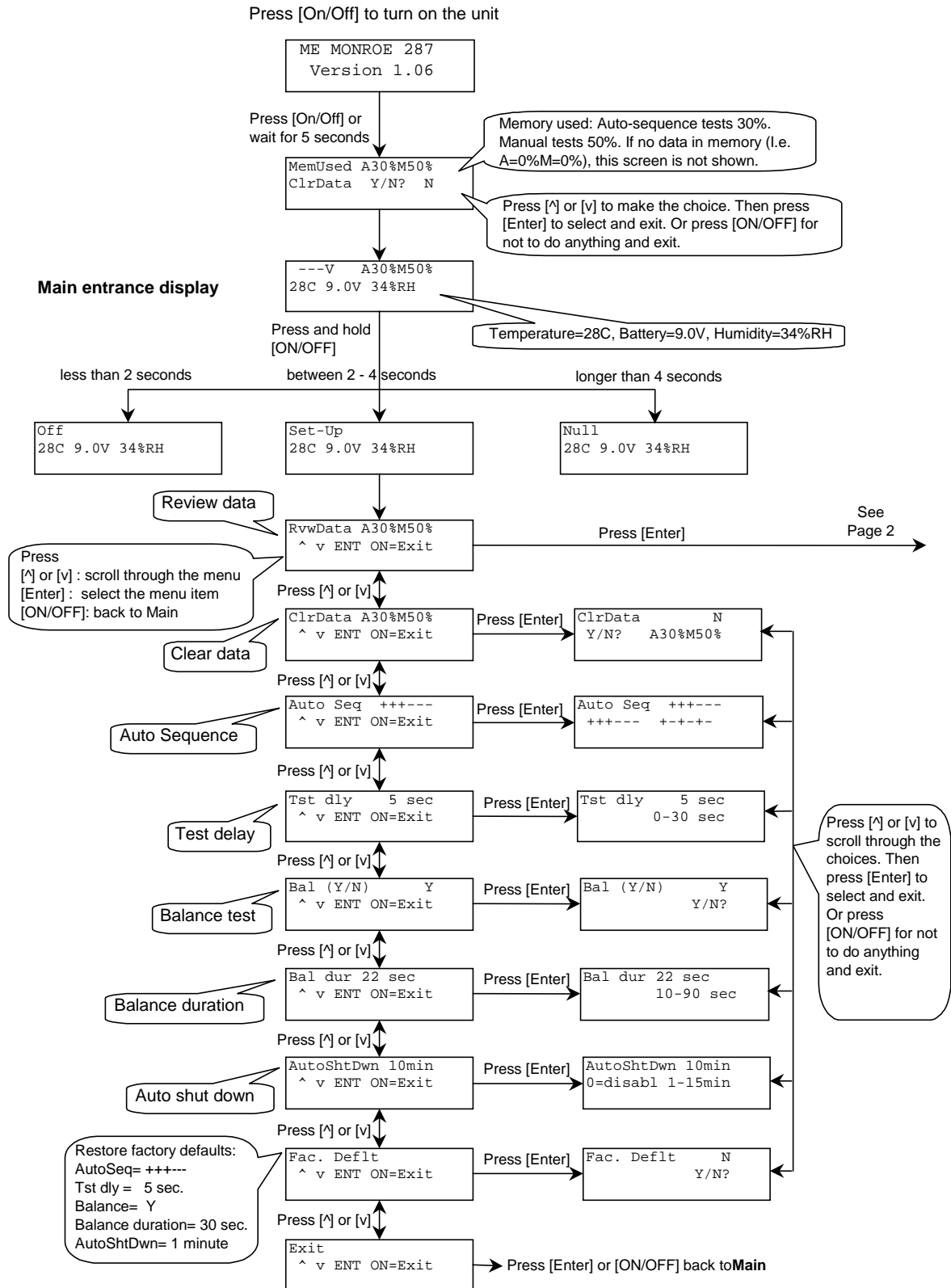


100 Housel Ave | PO Box 535 | Lyndonville NY 14098

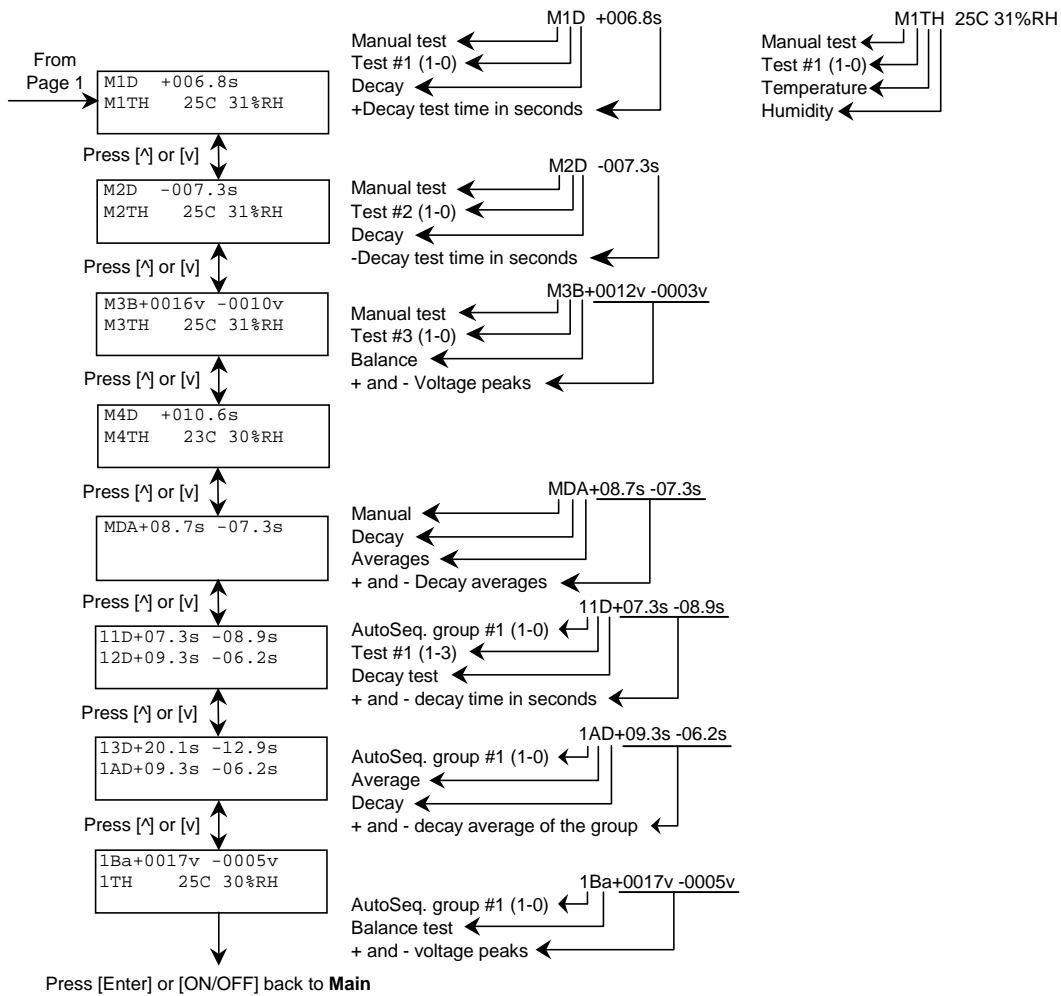
1-800-821-6001 | 585-765-2254 | fax: 585-765-9330 | monroe-electronics.com



IPA 287 Display and Operational Chart



A1L62



M1X62

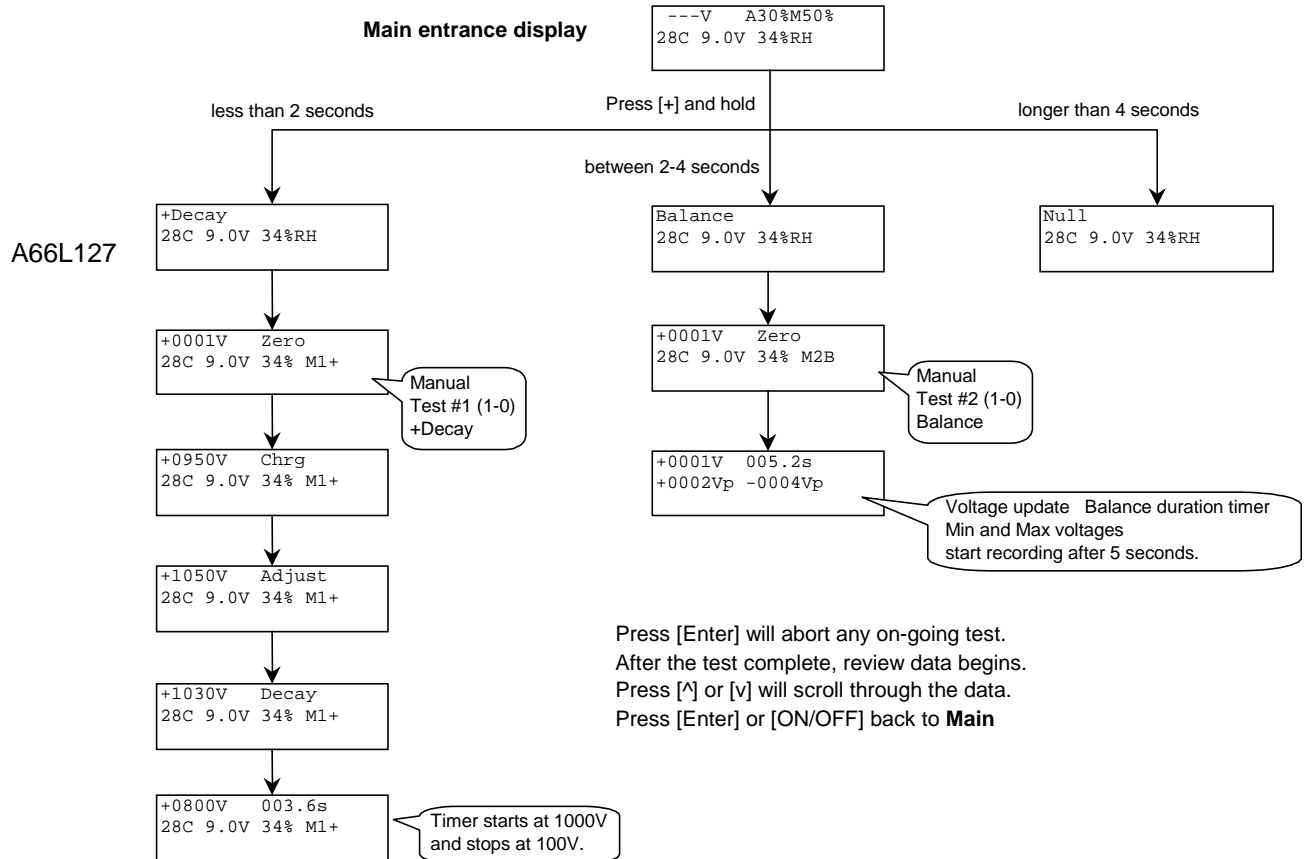
Manual Plus Decay Test (press [^] button less than 2 seconds)

The 287 unit will Zero for 4 seconds, Charge to over +1050V, Adjust to +1050V for about 3 seconds, then Decay. The decay timer starts at +1000V and stops at +100V.

Manual Balance Test (press and hold [^] or [v] button for 2-4 seconds)

The 287 will Zero for 4 seconds, then Balance for the time duration. Start recording Min and Max voltage levels after 5 seconds.

Up to 10 Manual test results can be stored in memory. They are named M1 thru M0 where M0 is the 10th test.

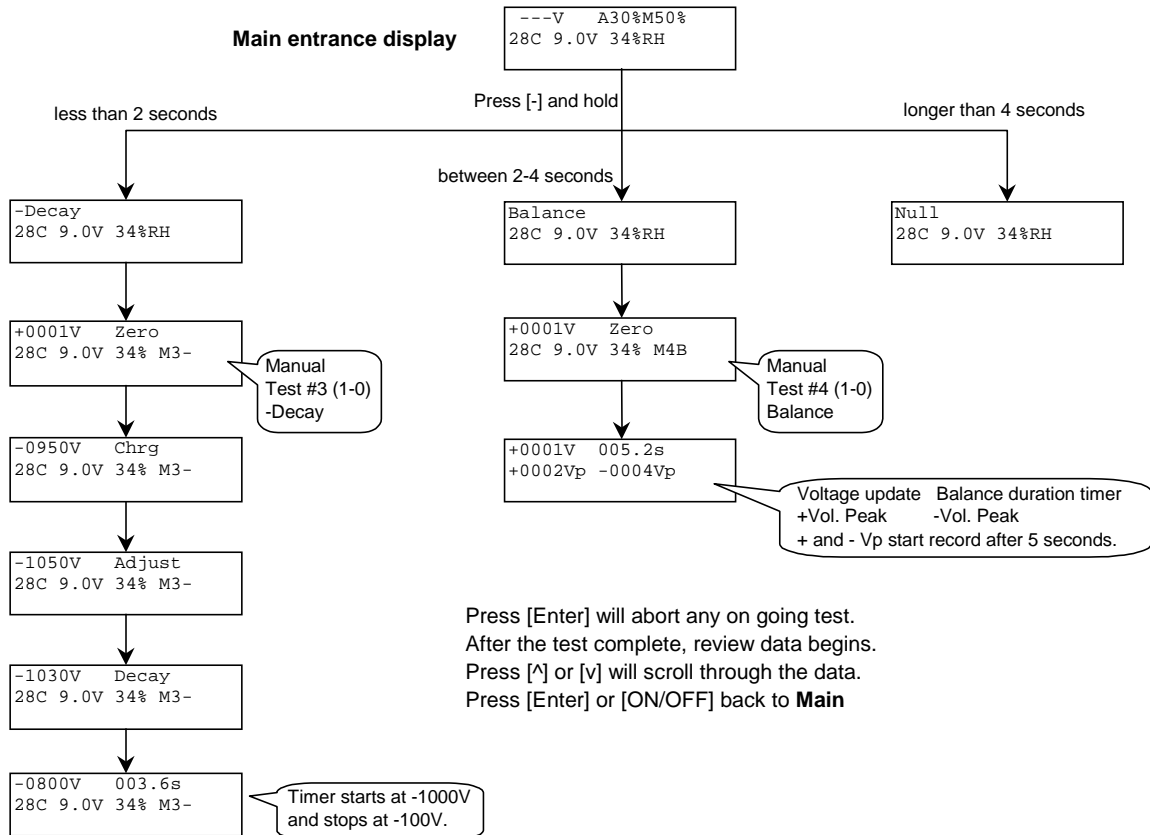


Manual Minus Decay Test (press [v] button less than 2 seconds)

The 287 unit will Zero for 4 seconds, Charge to over -1050V, Adjust to -1050V for about 3 seconds, then Decay. The decay timer starts at -1000V and stops at -100V.

Manual Balance Test (press and hold [^] or [v] button for 2-4 seconds)

The 287 will Zero for 4 seconds, then Balance for the time duration. Start recording Voltage peaks after 5 seconds.



M66X127

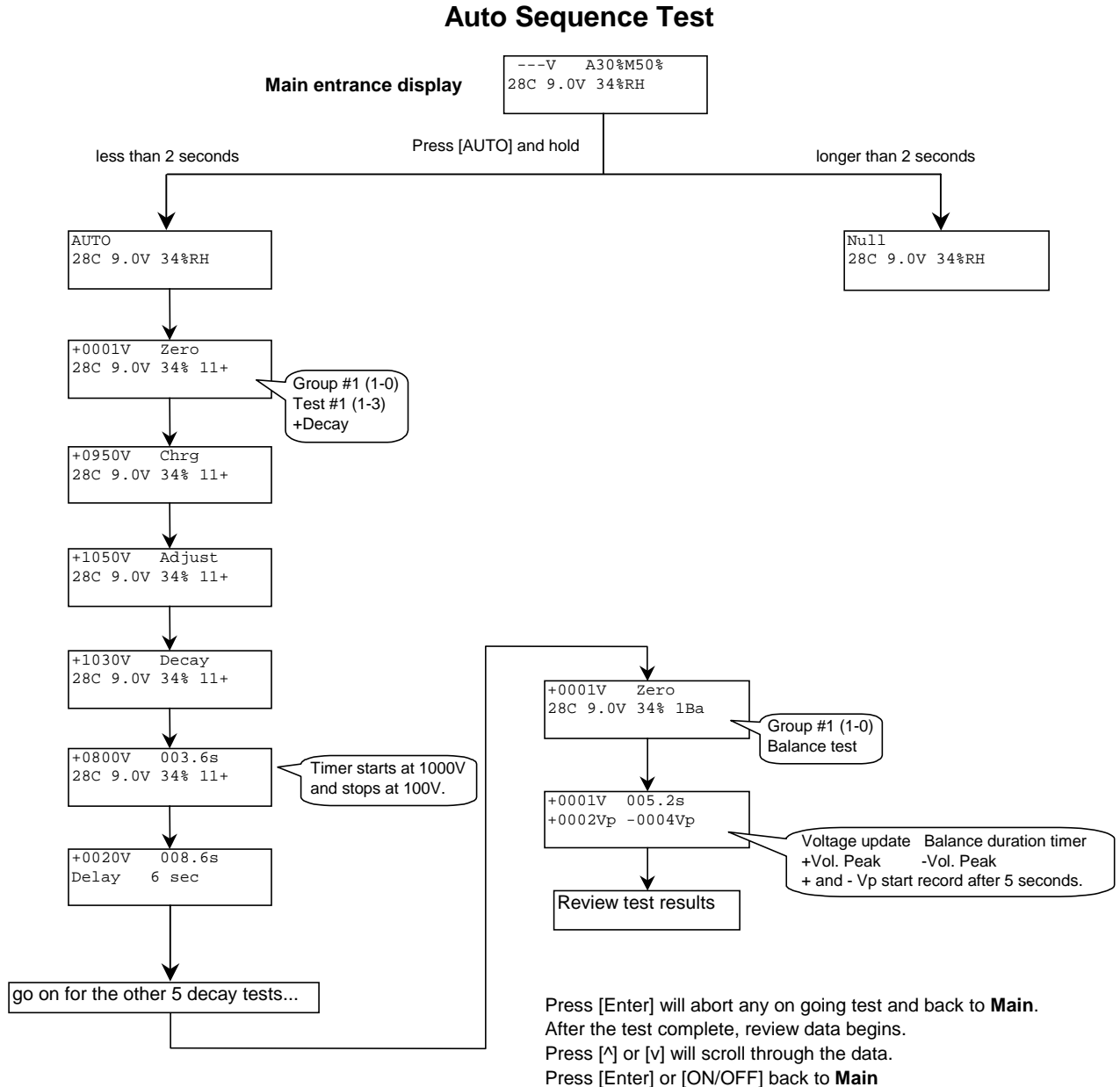
Auto Sequence GroupTest (press [AUTO] button less than 2 seconds)

The 287 unit will perform up to 10 groups of automatic test sequences and store the results in memory. Groups are named 1 thru 0 where 0 is the 10th. Each group has 3 +decay, 3 -decay, and an optional balance test. The sequence can be set in the Set-Up Menu.

Decay test: Zero for 4 seconds, Charge to over +/-1050V, Adjust to +/-1050V for about 3 seconds, then Decay. The decay timer starts at +/-1000V and stops at +/-100V.

Balance Test: Zero for 4 seconds, then Balance for the time duration. Start recording Voltage peaks after 5 seconds.

The delay time between the tests can be set in the Set-Up Menu.



A131L192

Error Messages

What to do...

```
Battery Low 7.5V  
Off in 5 sec.
```

Change the battery.

```
---V A30%M50%  
28C 9.0V Er%RH
```

Humidity is out of 10% - 90% range or sensor failure. If sensor failure, contact factory for repair.

```
+0750V Chrg  
>= 60s
```

High Voltage charging has taken more than 60 seconds and has not yet reached at least 1050 volts. Make sure nothing is contacting the charge plate and the standoffs underneath are clean.

```
+1200V Adjust  
>= 60s
```

High Voltage has taken more than 60 seconds adjusting to 1050 volts. Make sure no source is contacting the charge plate to prevent adjustment. Check your ionizer for extreme imbalance.

```
+1020V Decay  
>= 200s
```

Voltage Decay for more than 200 seconds. Check your ionizer.

```
EEProm Fail
```

Contact factory.

M131X180